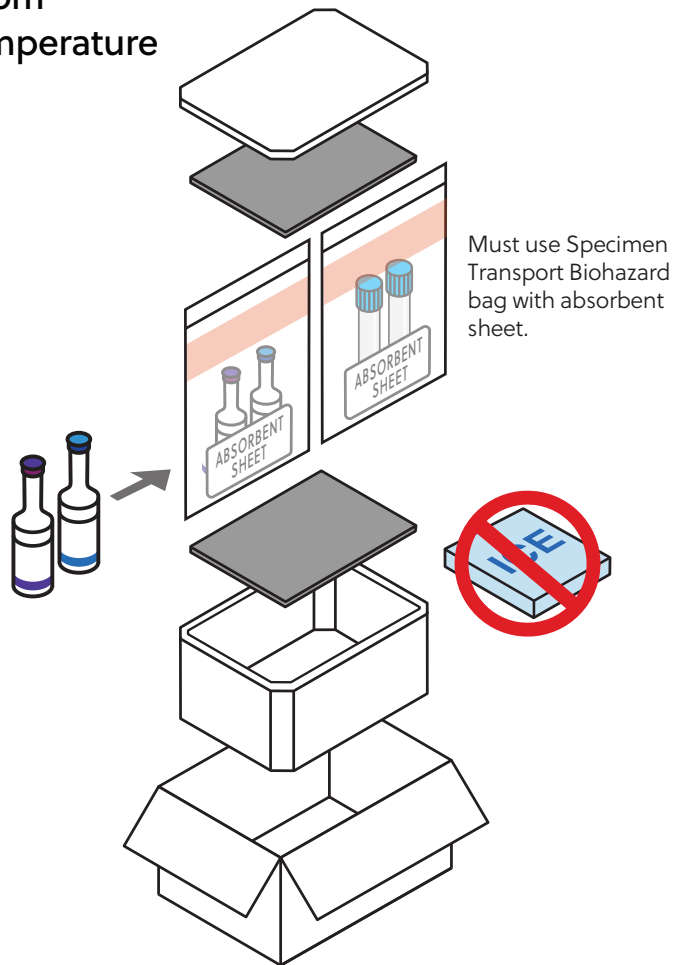


Specimen Packaging

Room Temperature



Refrigerated

Large Box:
Use 4 ice packs

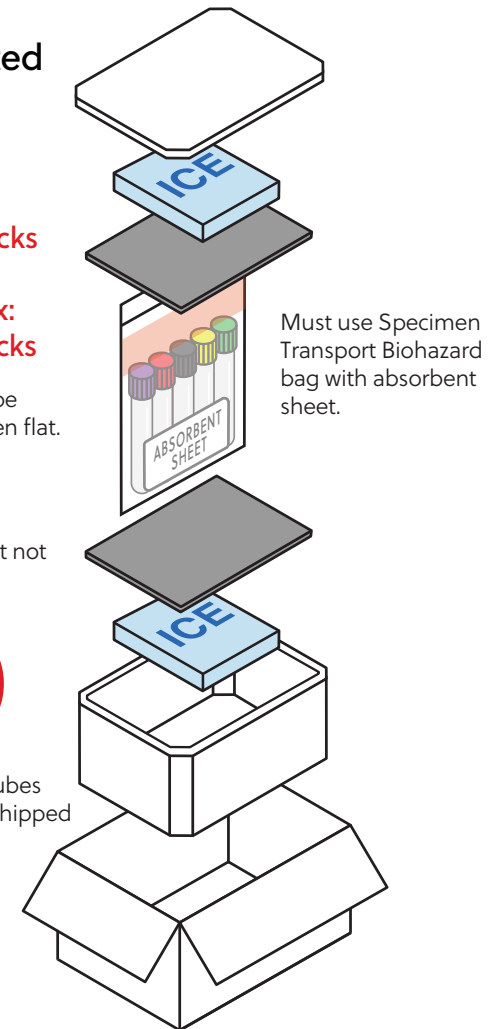
Medium Box:
Use 2 ice packs

Ice packs must be completely frozen flat.

Use foam layer.
Specimens must not touch ice packs.



Light blue top tubes
MUST NOT be shipped refrigerated.



Ascend Clinical Posters and Reference Manual specify shipping temperature for each specimen type.