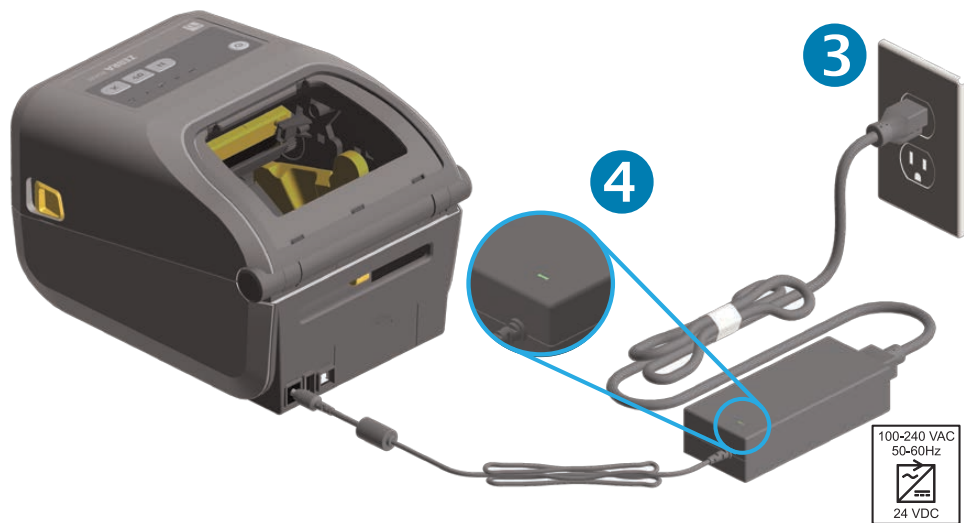
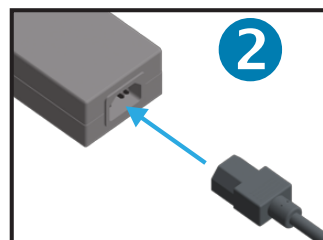
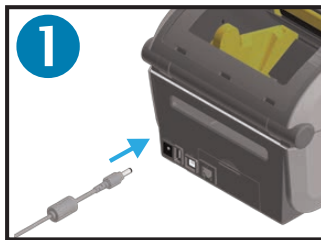


# Zebra ZD420 Label Printer Troubleshooting Guide

## STATUS LIGHT ERRORS

STATUS	PAUSE	DATA	SUPPLIES	NETWORK	
					Ready
					Paused
					Cover Open
					Media Out
					Network Error
					Ribbon Low
					Ribbon Out
					Communication Error



If you have any questions, please contact Client Services at 800.800.5655, Option 1.

## Label Printer Troubleshooting Guide p.2

### PRINT QUALITY PROBLEMS

#### No print on the label

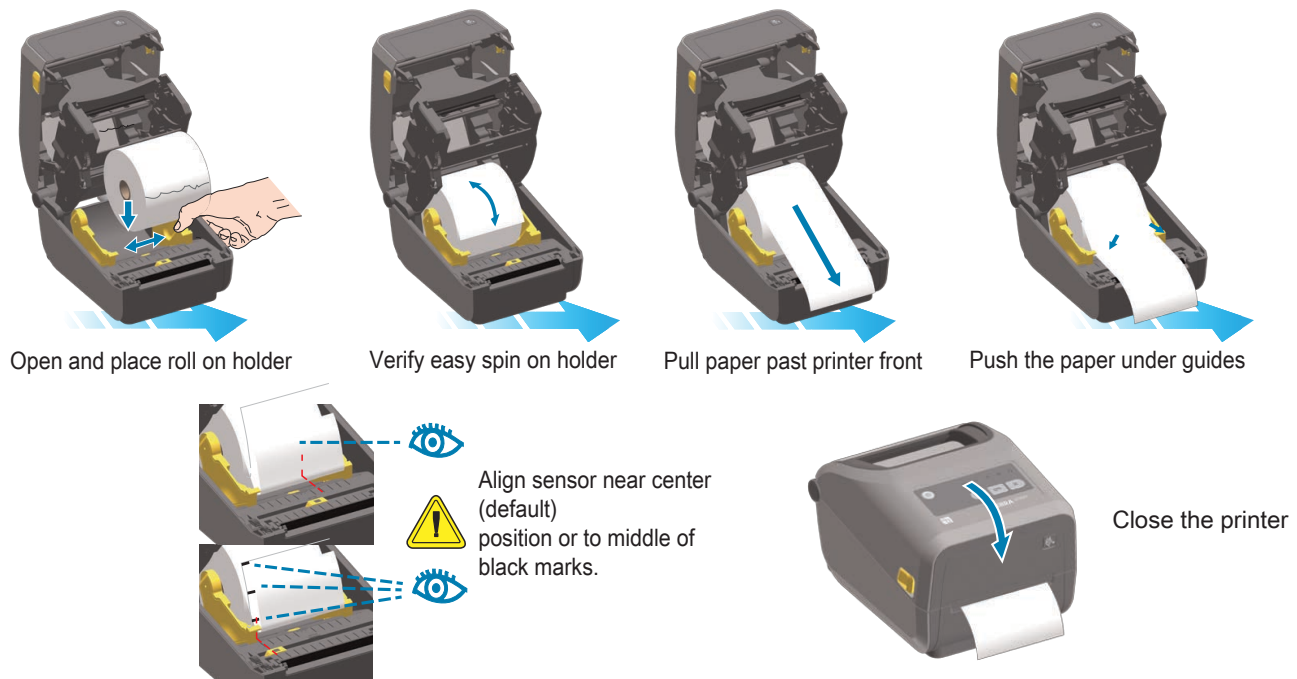
- Check to make sure the label roll is loaded correctly

#### The printed barcode and information does not look right

- Clean the printhead using an alcohol wipe

#### The label is misaligned

- Check to make sure the label roll is loaded correctly
- Contact Clients Services to have printer calibrated



### LOADING LABEL ROLL

1. Pull the release latches toward the front of the printer
2. Open the Media Guides and hold open the Media Hangers
3. Lower the roll between the hangers
4. Make sure to position the roll so that its printing surface will be up as it passes over the media guides
5. For some models, close the media guides by turning the guide adjuster knob to the front
6. The media guide edges should touch but should not restrict the edges of the roll
7. Close the top cover and press down until the latches snap into place
8. Press the Feed Button to verify that the labels come out properly

If you have any questions, please contact Client Services at 800.800.5655, Option 1.