

How to Install and Configure Your Label Printer

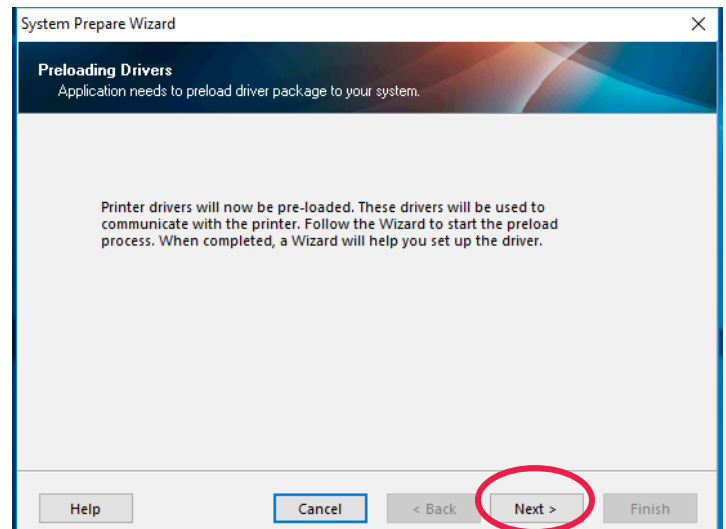
Zebra ZD410



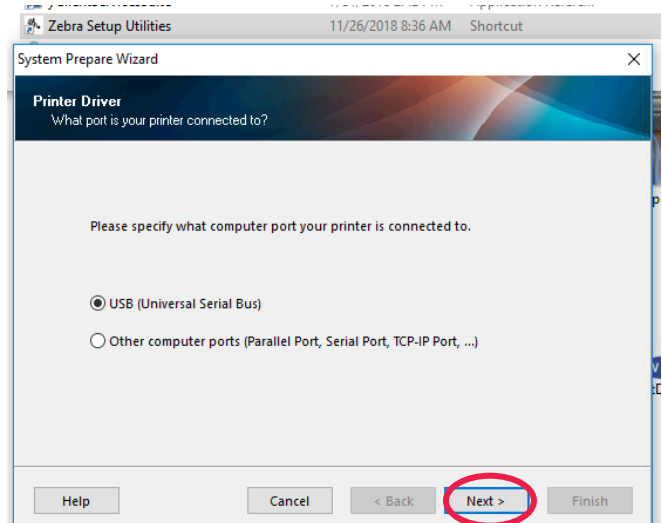
Install Zebra Setup Utilities on the computer you will be installing the printer on by running **ZebraSetupUtilities.exe** from the thumb-drive provided by Ascend

Run Zebra Setup Utilities

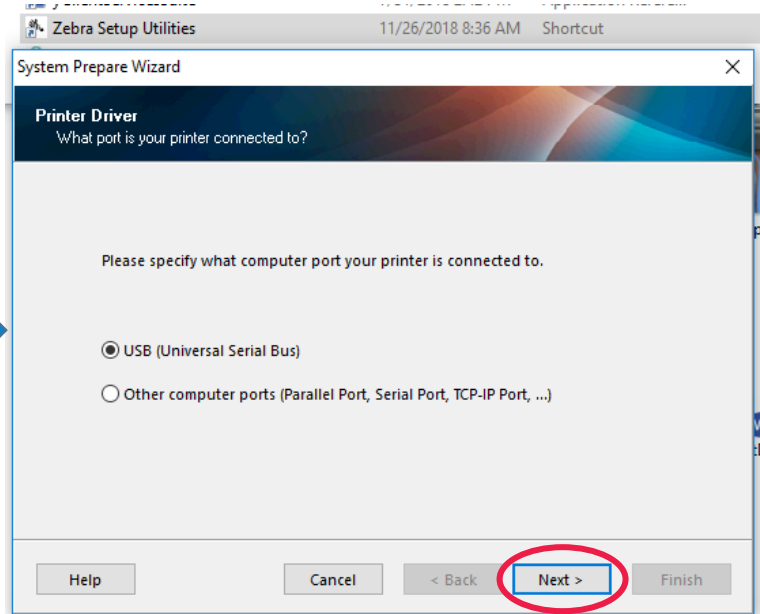
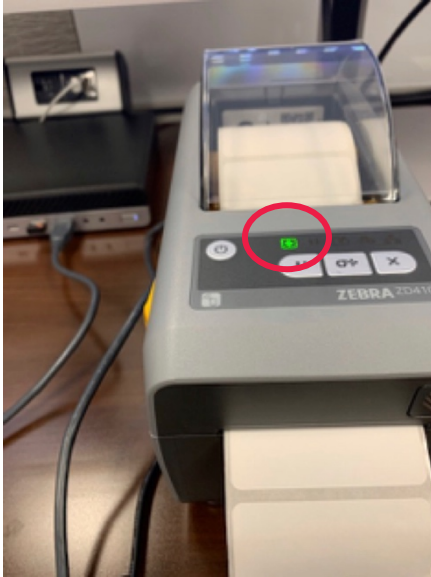
Click 'Next' to install the pre-loaded drivers.



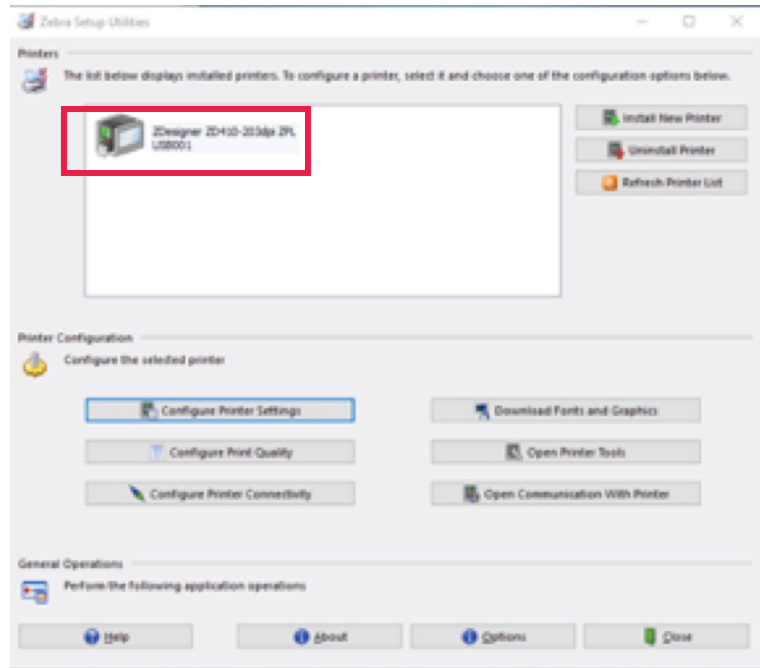
First, load labels into your Label Printer, plug in the power cord, and plug the USB cord from the printer to your computer as seen in the picture below, then click 'Next'.



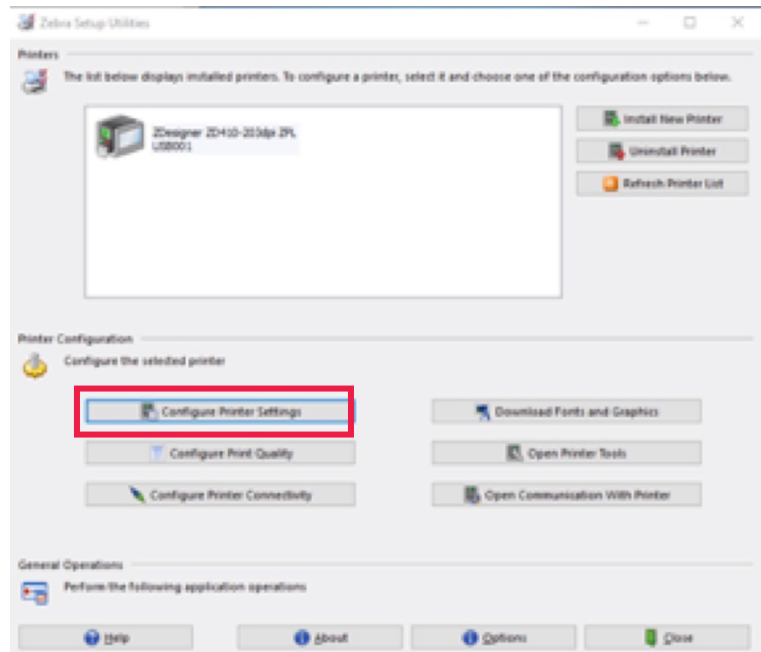
After loading the labels, close the lid of the printer, press the power button once. When the LED light turns from orange to green, select the 'USB (Universal Serial Bus)' option, and click 'Next'.



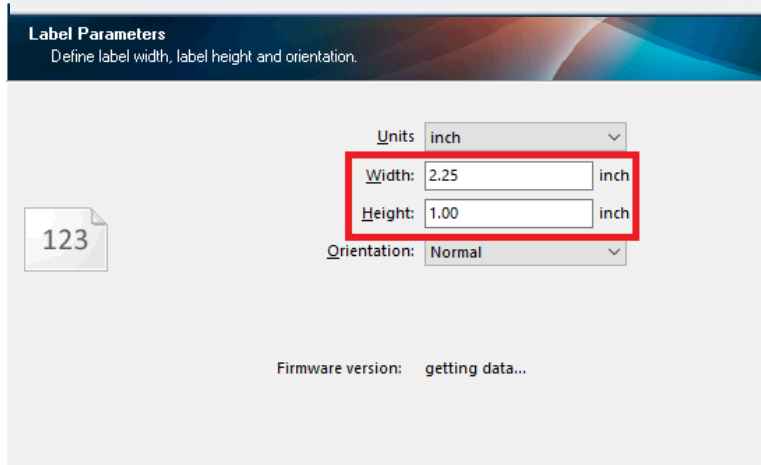
Your printer should appear as installed now on Zebra Set-up Utilities.



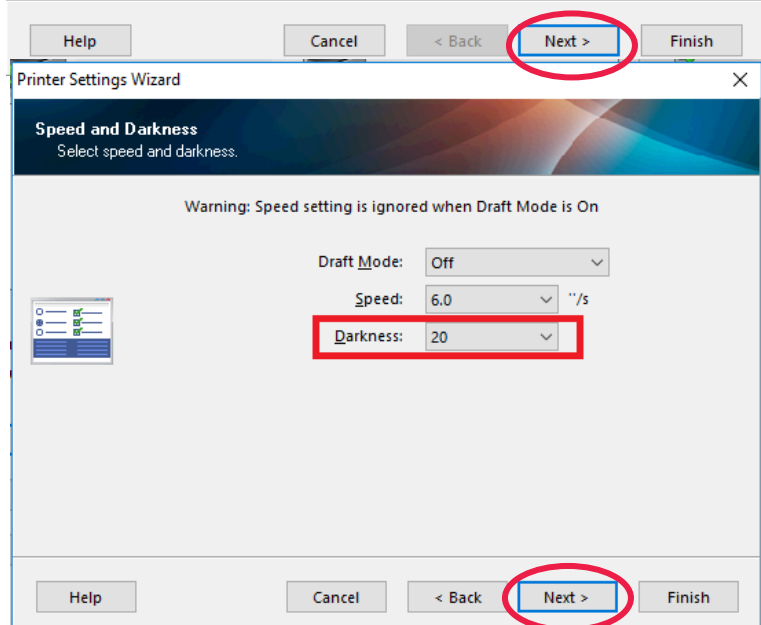
Click 'Configure Printer Settings'.



Set 'Width' to 2.25" and 'Height.' To 1.00".
Then click 'Next'.



Set 'Darkness' to 20.
Then click 'Finish'.



Your label printer is now installed.